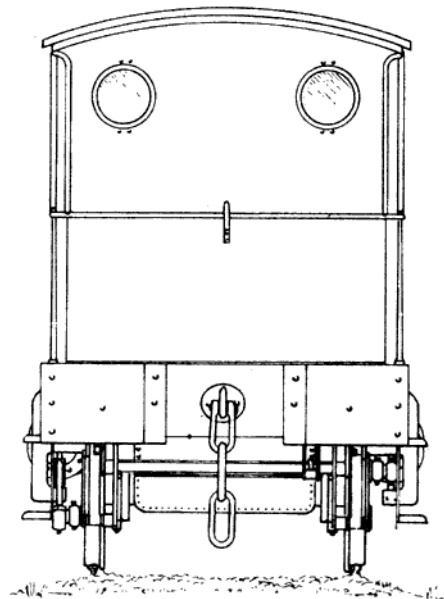
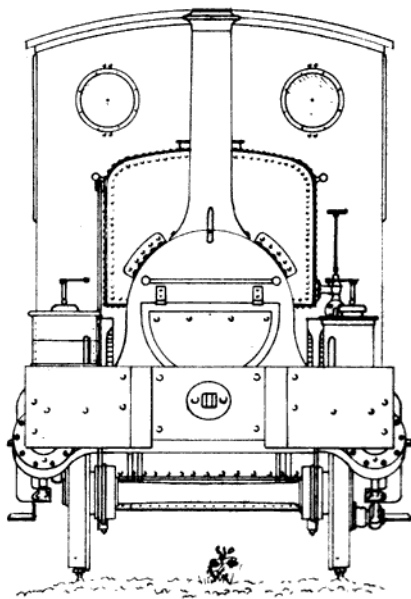
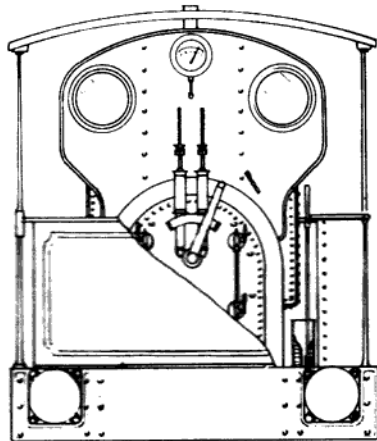
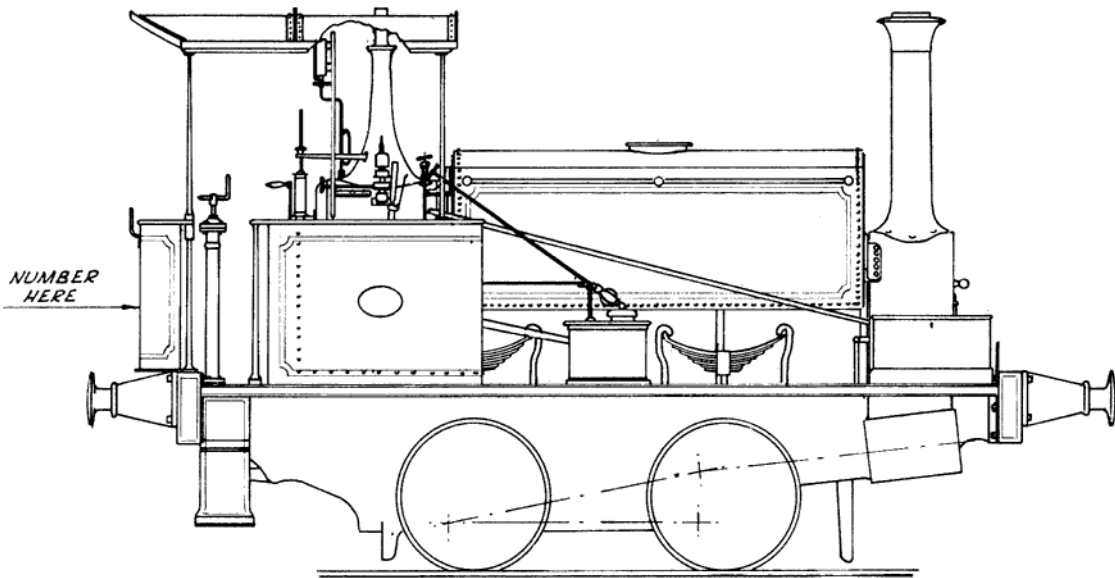


*NOTE - INJECTOR SHOWN IS CORRECT FOR
SECR CONDITION ONLY - SEE DETAIL
DRG. FOR S.R. VERSION.*

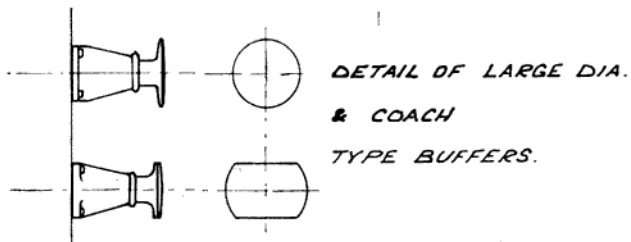


Drawn by Colin Binnie. © Colin Binnie

More Binnie drawings available at <http://www.colinbinnie.com/>

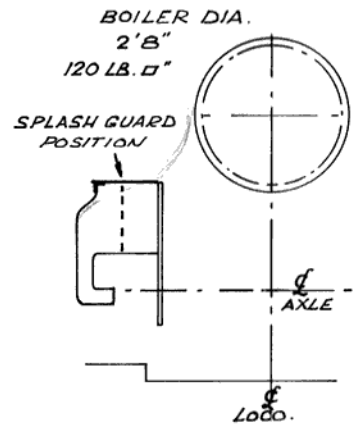
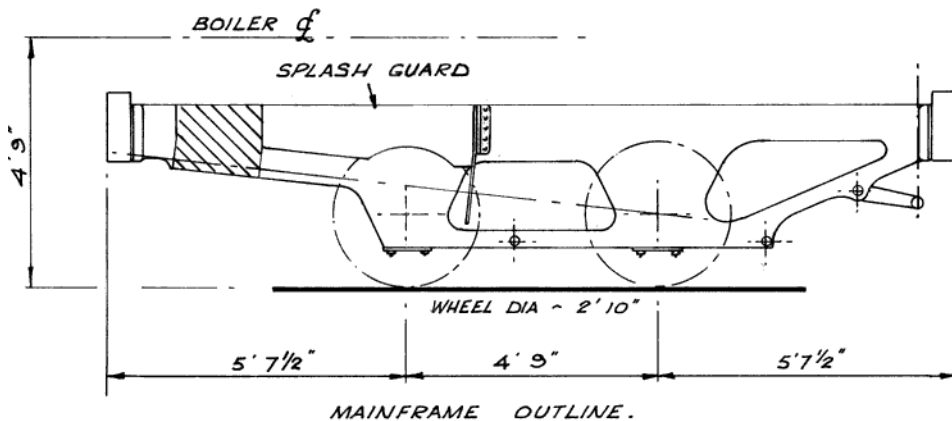


DIMENSIONAL DETAILS	
OVERALL LENGTH	18'6"
OVER B'BEAMS	16'0"
BOILER PRESSURE	120 LB/G"
TANK CAPACITY	450 GALLS.
BUNKER CAPY.	8 CWT.
WEIGHT	17 TONS.
CYLINDERS	10"X16"
TRACTIVE EFFORT	
AT 80% B/PRESSURE	4,500 LBS.
" 85% " "	4,800 LBS.
" 90% " "	5,100 LBS.
HEATING SURFACE (TOTAL)	311 SQ.FT.
" " (TUBES)	280 SQ.FT.
" " (F'BOX)	31 SQ.FT.
GRATE AREA	5 3/4 SQ.FT.



DETAIL OF NUMBER ON REAR OF CAB.

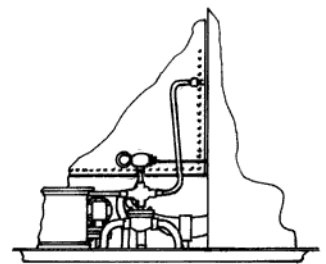
An article by Colin describing this locomotive can be found at colinbinnie.com



MOTION BRACKET
DETAIL.

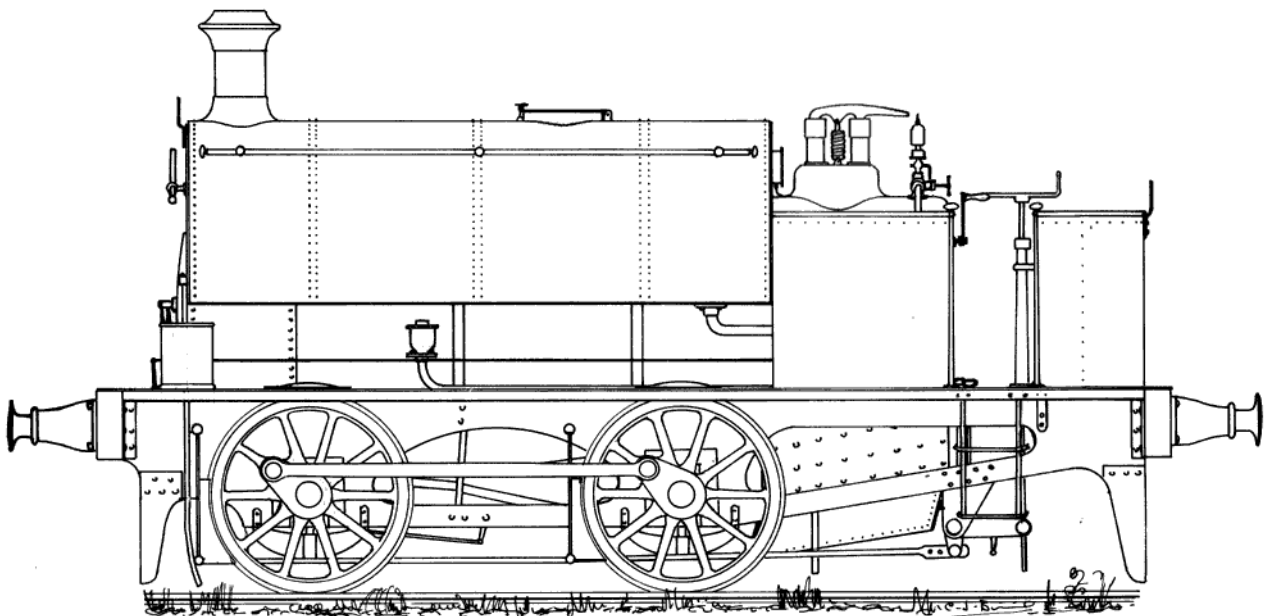
DATE	CHIMNEY	COUPLING	CAB	BUFFERS	STEPS	LIVERY
*1881	AS DRG. 2.	?	OPEN	SMALL	PLAIN	?
PRE-1899	AS DRG. 2.	5 LINKS R. ? FRONT	CANOPY ONLY	SMALL	PLAIN	PECULIAR
1902	AS DRG. 2.	5 LINKS R. 3 LINKS F.	ENCLOSED CAB	LARGE	PLAIN	WAINWRIGHT
*1913	AS DRG. 3.	"	"	LARGE	PLAIN	?
1928	AS DRG. 3.	? REAR 5 LINKS F.	"	LARGE	EDGED	SR AS DRG
1935	AS DRG. 3.	3 LINKS R. NONE F.	"	WOODEN BLOCKS	EDGED	S.R.
1938	AS DRG. 3.	3 LINKS R. NONE F.	"	COACH TYPE	EDGED	S.R.

DATES MARKED THUS * ARE DATES OF ORIGIN OTHERS
ARE DATES OF PHOTOGRAPHIC EVIDENCE.



S.R. INJECTOR
DETAIL.

DETAILS OF S.R N° 225S.



PROPOSED S.E.R. 0-4-0T 1876-1881
(Nos 279 to 284)