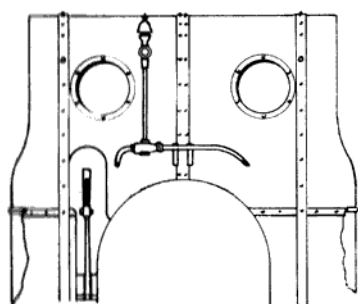
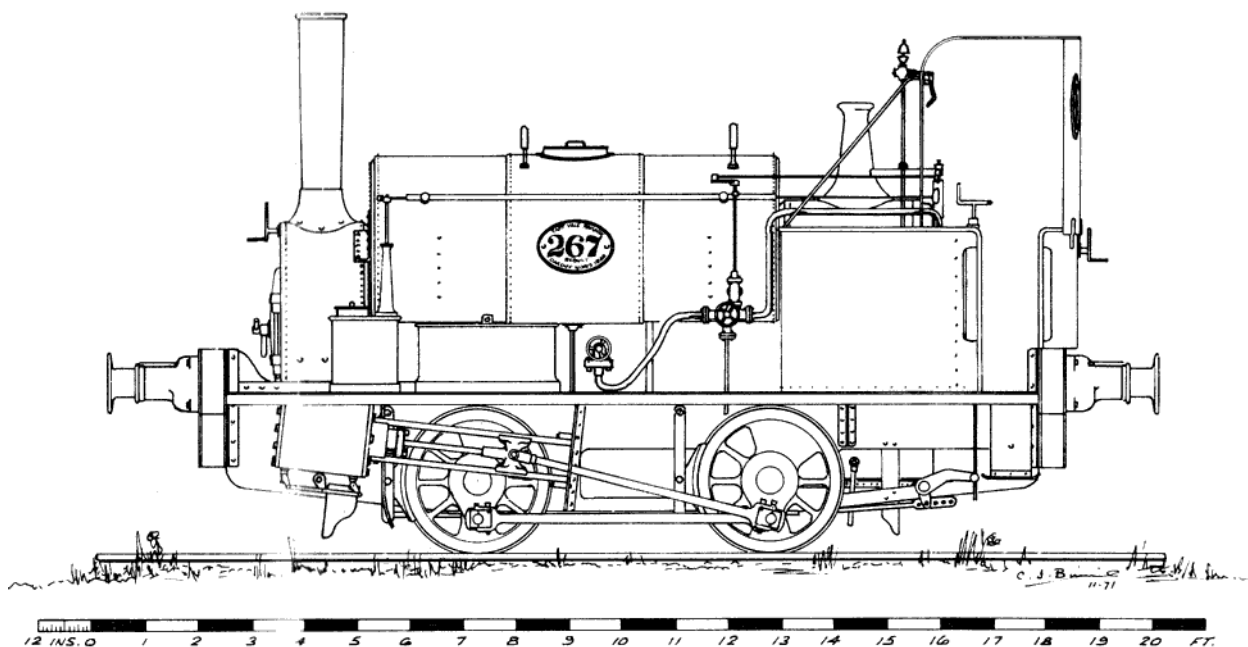
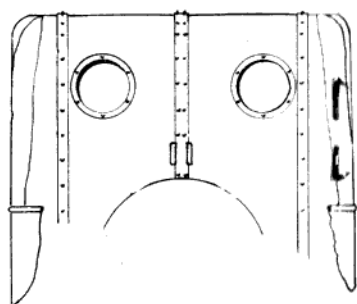


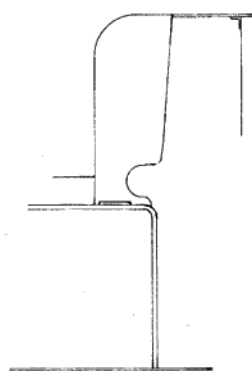
# Taff Vale Railway Locomotive 267



*DETAIL OF CAB FRONT  
SHOWING WHISTLE  
PIPING, REVERSING  
LEVER ETC.*

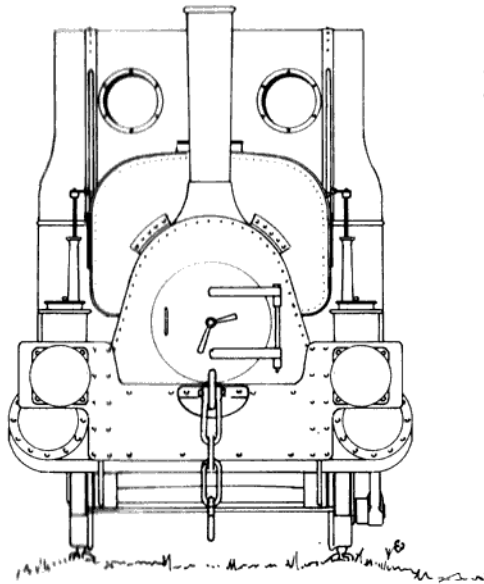


*CAB SIDE SCREENS ~  
MADE OF THIN SHEET  
METAL OR ROOFING  
FELT; FOLDED FRONT  
CORNERS & FAR FROM FLAT. WERE  
FITTED c 1919/23.*

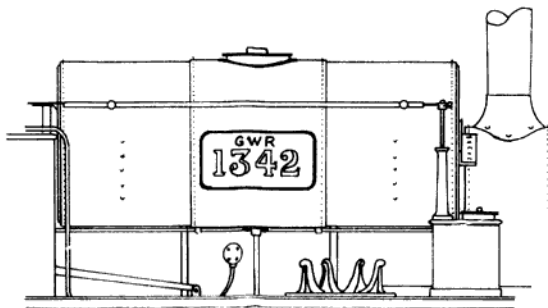
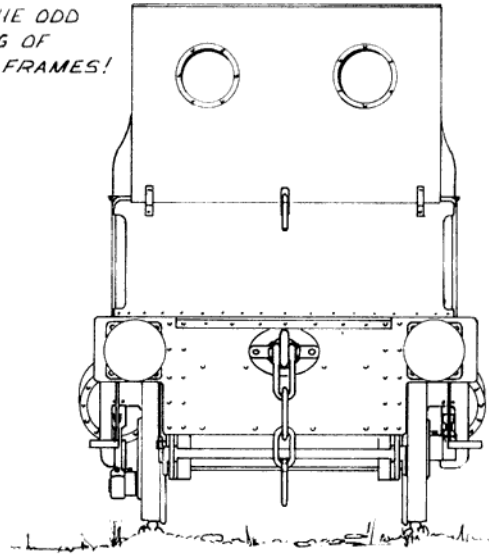


Drawn by Colin Binnie. © Colin Binnie

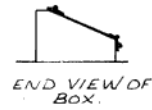
More Binnie drawings available at <http://www.colinbinnie.com/>



NOTE THE ODD  
RIVETING OF  
WINDOW FRAMES!

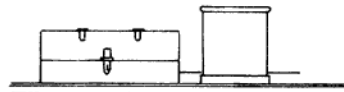


R.H.S. DETAIL OF ENGINE AS G.W.R.  
No 1342 ~ c.1923.



END VIEW OF  
BOX.

TOOL BOX FITTED BY  
G.W.R. . REPLACING  
CHAIN DOGS C. 1924/5



An article by Colin describing this locomotive can be found at  
[colinbinnie.com](http://colinbinnie.com)